

WALNUT CENTER

Seventh & Walnut Streets
Bloomington, IN



BUILDING TYPE
Downtown
Retail/Restaurant
w/Parking Garage
Location for Lease

SF AVAILABLE
0 sf

CONTACT
Debi O'Heran
debio@wspropertygroup.com
812.332.9575

DEMOGRAPHICS

Population
1 mi. 39,267
3 mi. 104,233
5 mi. 133,122

Average HH Income

1 mi. \$46,760
3 mi. \$66,542
5 mi. \$71,482

PROPERTIES

SERVICES

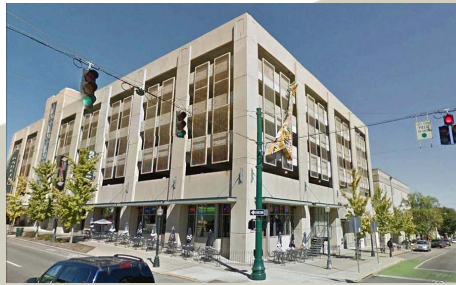
FOR INVESTORS

ABOUT US

CONTACT US

GALLERY





AERIAL



FEATURES

- Street-level retail
- Large glass storefronts
- 386-space public parking garage attached on Bloomington's busiest thoroughfare

LOCATION FEATURES

- Within walking distance of Indiana University and downtown retail district
- Surrounded by scores of restaurants, unique shops and live music clubs
- 2024-2025 IU student count 48,952
- Public/private partnership between WS Property Group and the City of Bloomington

PROPERTY INFORMATION

Walnut Center is in the heart of downtown Bloomington. It is street-level retail located under a 6-story parking garage with 386 reserved/leased and 100 metered spaces.

The center is located at the intersection of N. Walnut Street and 7th Street in Bloomington's downtown retail district. It is adjacent to restaurants, shops, and various music clubs that attract not only the 40,000+/- Indiana University students but also local residents and professionals.

Current Tenants are Yogi's, with 9,404 sf, a fun filled local Restaurant Brewhouse with Sports & Entertainment and Homie Hot Pot & Sushin, a traditional Chinese cuisine.